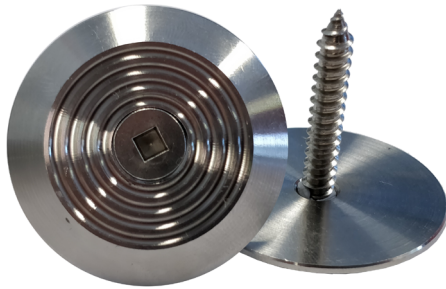


## Strong Hold 2812 Counter Sunk



### FEATURES

- Marine Grade 316 Stainless Steel
- Supplied with screws and plugs
- Tested to Australian standard P5

Designed for compliance with AS 1428.4

Designed for compliance with AS 1884 1985 Floor Coverings

Designed for compliance with AS/NZ 1428.4 Tactile Installation

Backed by 12 month warranty

### SLIP RESISTANCE PROPERTIES

Slip Rating / Resistance P5

Designed for compliance with AS/NZs 3661.2 Slip Resistance

### LUMINENCE PROPERTIES

Important information: To determine a luminance contrast between a substrate see: AS 1428.4:2009.

Luminance Value 38

### COLOUR RANGE

Silver Available

**TYPE** Tactile Surface Ground Indicator

**RANGE** Stainless Steel

**DESIGN** 2812 Strong Hold Countersunk

**MATERIAL** 316 grade Stainless Steel

**DIMENSIONS** SIDE DIA: 35mm TOP DIA:25mm  
Thickness: 4-5mm

### Fire Test

Stainless steel is non-combustible and suited to all parts of 9a ,9c buildings and the like. Tactiles are deemed "Insignificant area therefore not increasing the hazard of fire".

### Environmental

TBC

### Abrasion

TBC

### Impact Resistance

TBC

### UV Resistance

UV Stable

### Warranty

5 Years on product - 12 month installation warranty

### Maintenance

Clean with Neutral Detergents, ensure minimal detergent used so as it does not leave residue. Best results clean with Emulsion free Disinfectant (Contact Novaproducts ) Regular document inspection for compliance is required.